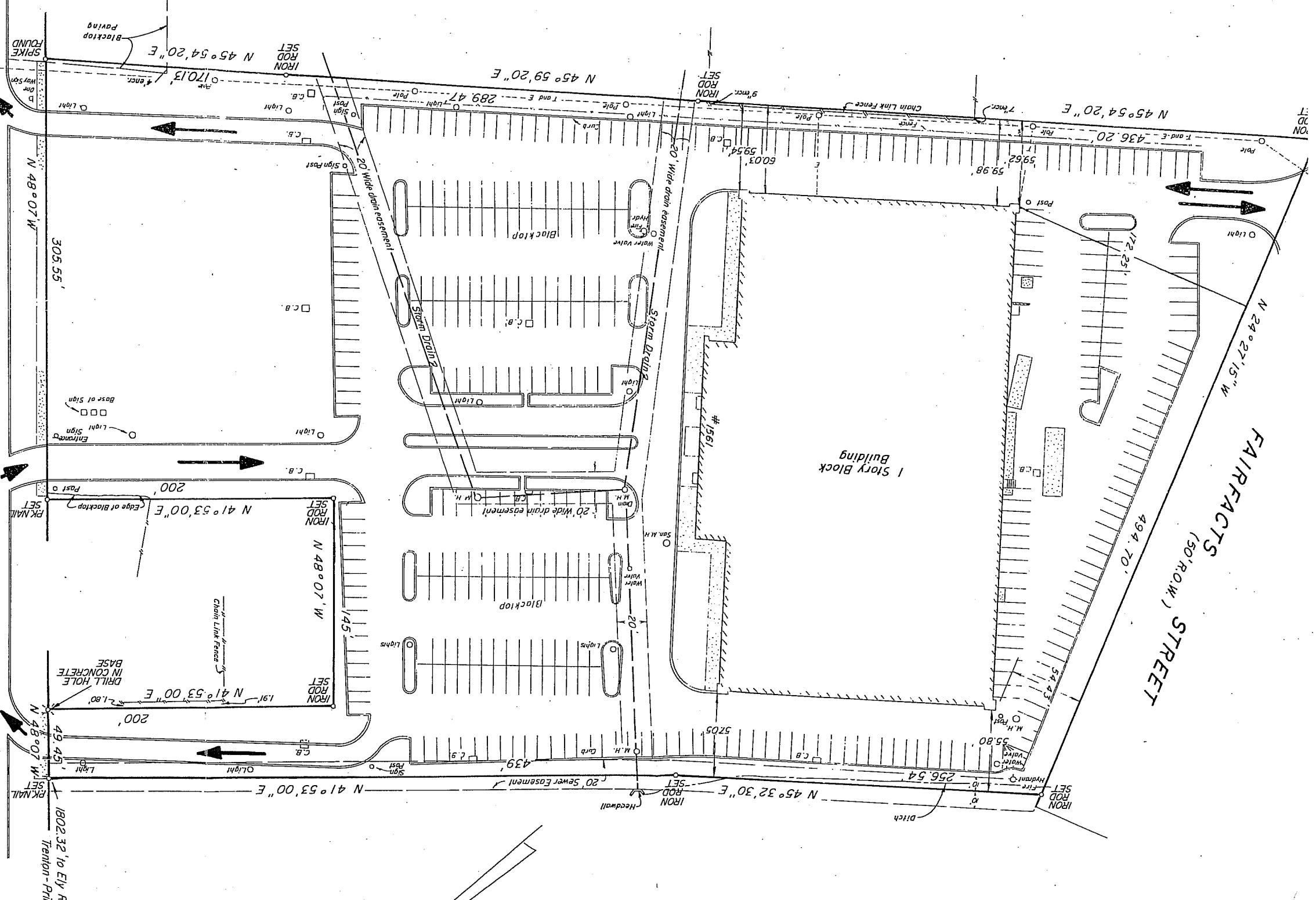


NORTH OLDEN AVENUE EXTENSION
(Variable Width)



FAIRFACTS STREET
(30' R.O.W.)

1 Story Block Building

305.55'

N 48° 07' W

N 41° 53' 00" E

N 48° 07' W

N 41° 53' 00" E

N 41° 53' 00" E

N 45° 59' 20" E

289.47'

N 45° 54' 20" E

436.20'

N 24° 27' 15" W

494.70'

N 45° 32' 30" E

256.54'

1802.32' to Ely R
Tramway - Pri