



**220**ROWAN  
BOULEVARD  
NEXUS PROPERTIES



*220*  
*On the Boulevard*

**QUESTIONS?  
CONTACT:**

**Phone:** 856-256-4266

**Fax:** 856-256-4475

**Email:** [housingquestions@rowan.edu](mailto:housingquestions@rowan.edu)

**[www.rowan.edu/reslife](http://www.rowan.edu/reslife)**

**STUDENT  
HOUSING**

[www.nexusglassboro.com](http://www.nexusglassboro.com)

The Office of Residential Learning & University Housing  
Savitz Hall, First Floor  
201 Mullica Hill Road  
Glassboro, NJ 08028



**DOWNTOWN  
GLASSBORO**  
APARTMENTS  
RETAIL  
PARKING

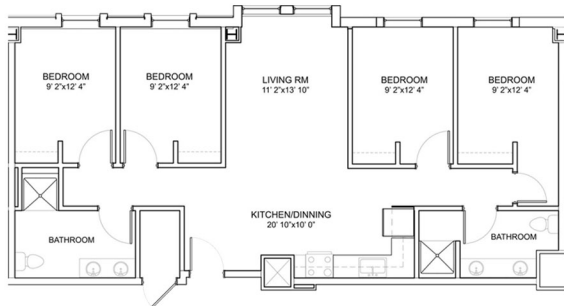
# 220 ROWAN BOULEVARD STUDENT HOUSING

220 Rowan Blvd is a fresh new approach to student housing where students can live, collaborate, shop and dine all without missing the experience of being a part of the growing Rowan University.

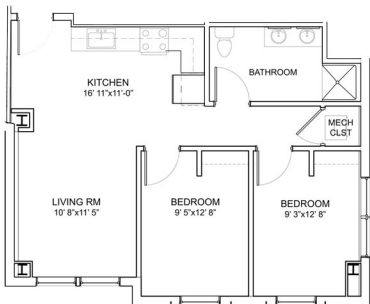
Located on Rowan Blvd, 220 Rowan Blvd is a mixed-use building with student housing, luxury apartments and retail. The building houses 456 students in 119 apartments.

## FLOOR PLANS

### 4 BEDROOM | 4 STUDENTS



### 2 BEDROOM | 2 STUDENTS

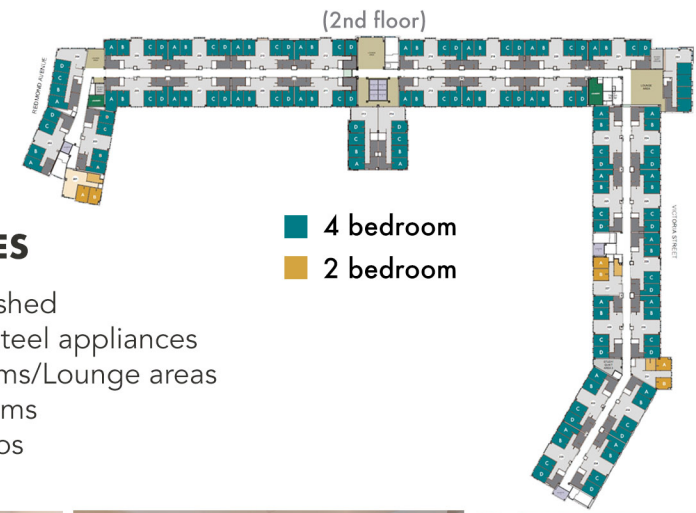


## HOW TO APPLY:

In order to live in 220 Rowan Blvd, students must apply through Rowan University Housing. For more information and pricing, visit Rowan University's housing website: [rowan.edu/reslife](http://rowan.edu/reslife)



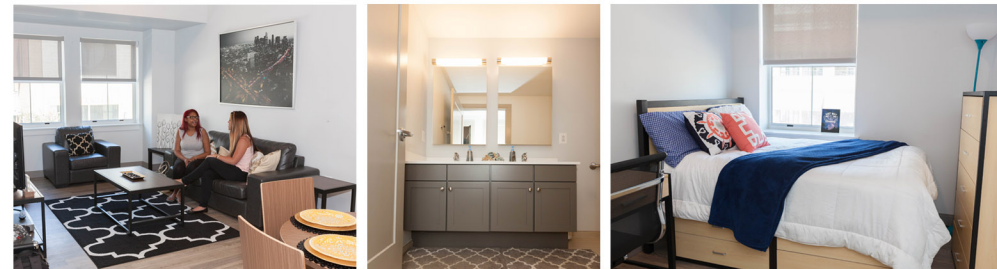
## BUILDING DIAGRAM



## AMENITIES

- Fully furnished
- Stainless steel appliances
- Study rooms/Lounge areas
- Single rooms
- Verizon Fios

- 4 bedroom
- 2 bedroom



To view all floor plans and amenities, visit [nexusglassboro.com](http://nexusglassboro.com)